



Troubleshooting Flowchart

Inspection of IAB Control System.

Start engine and allow it to idle.

Remove #2 vacuum hose from the IAB low control diaphragm valve and connect vacuum gauge to the hose.

Is there vacuum?

NO

Disconnect the #4 hose on IAB low control solenoid valve and connect a vacuum gauge to the hose.

Is there vacuum?

NO

Repair the blockage or vacuum leak between the IAB vacuum tank and the intake manifold.

YES

Turn the ignition switch OFF.

Disconnect the 6P connector.

Start engine and allow it to idle.

Measure voltage between BLK/YEL (+) terminal and RED/BLU (-) terminal.

Is there battery voltage?

YES

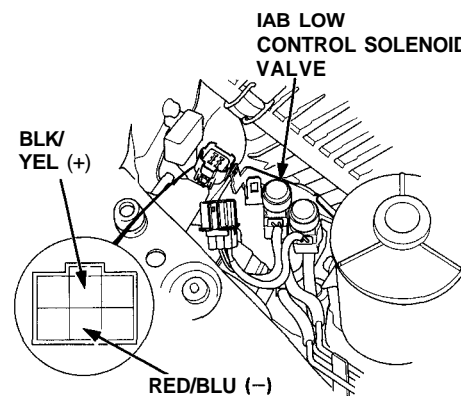
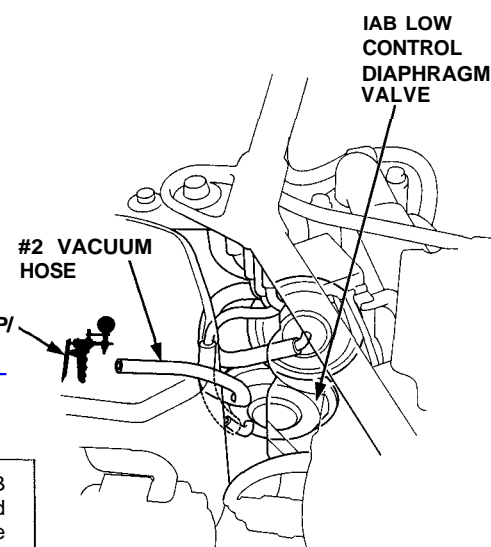
Replace the IAB low control solenoid valve.

NO

Measure voltage between BLK/YEL (+) terminal and body ground.

(To page 11-134)

(To page 11-134)



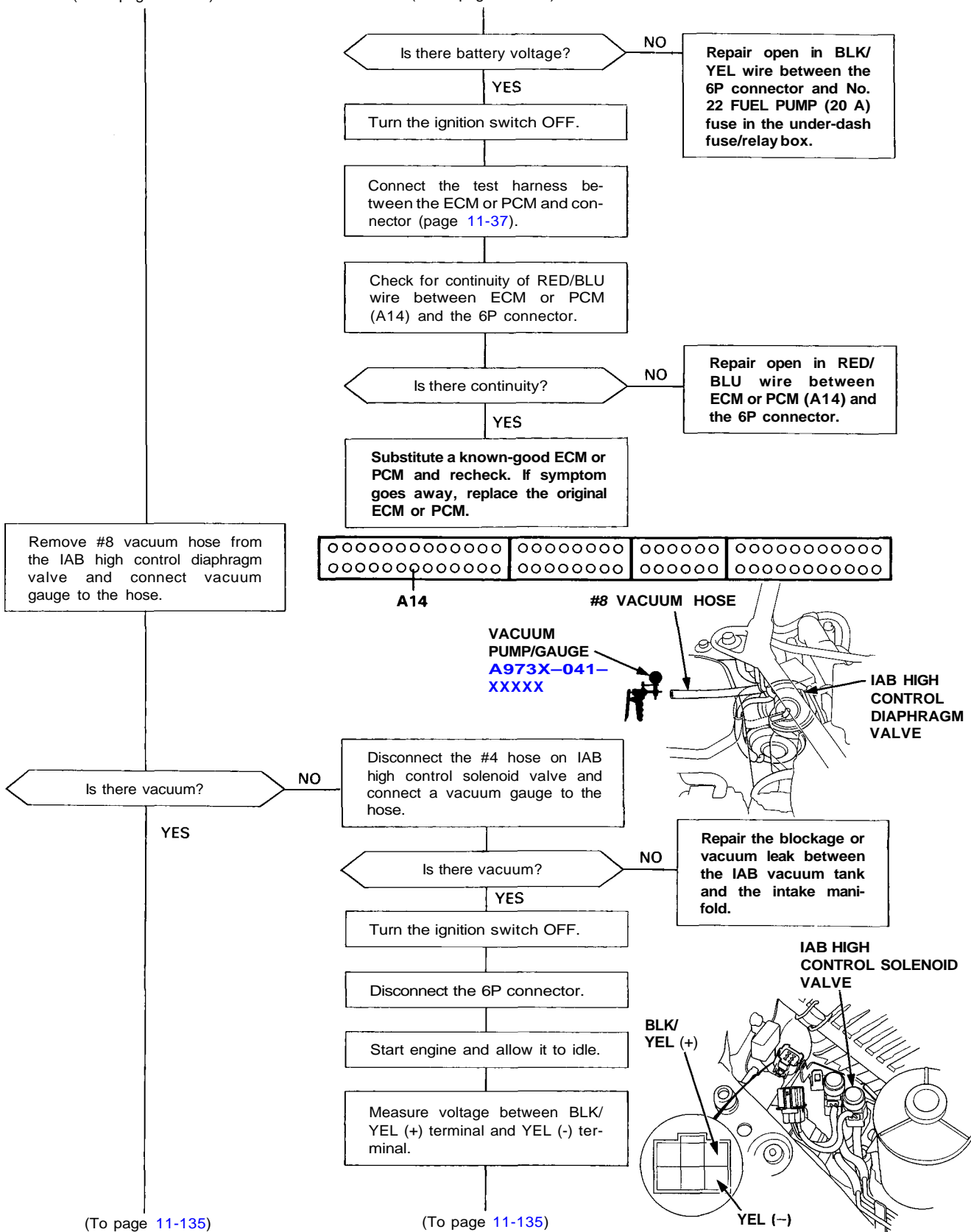
(cont'd)

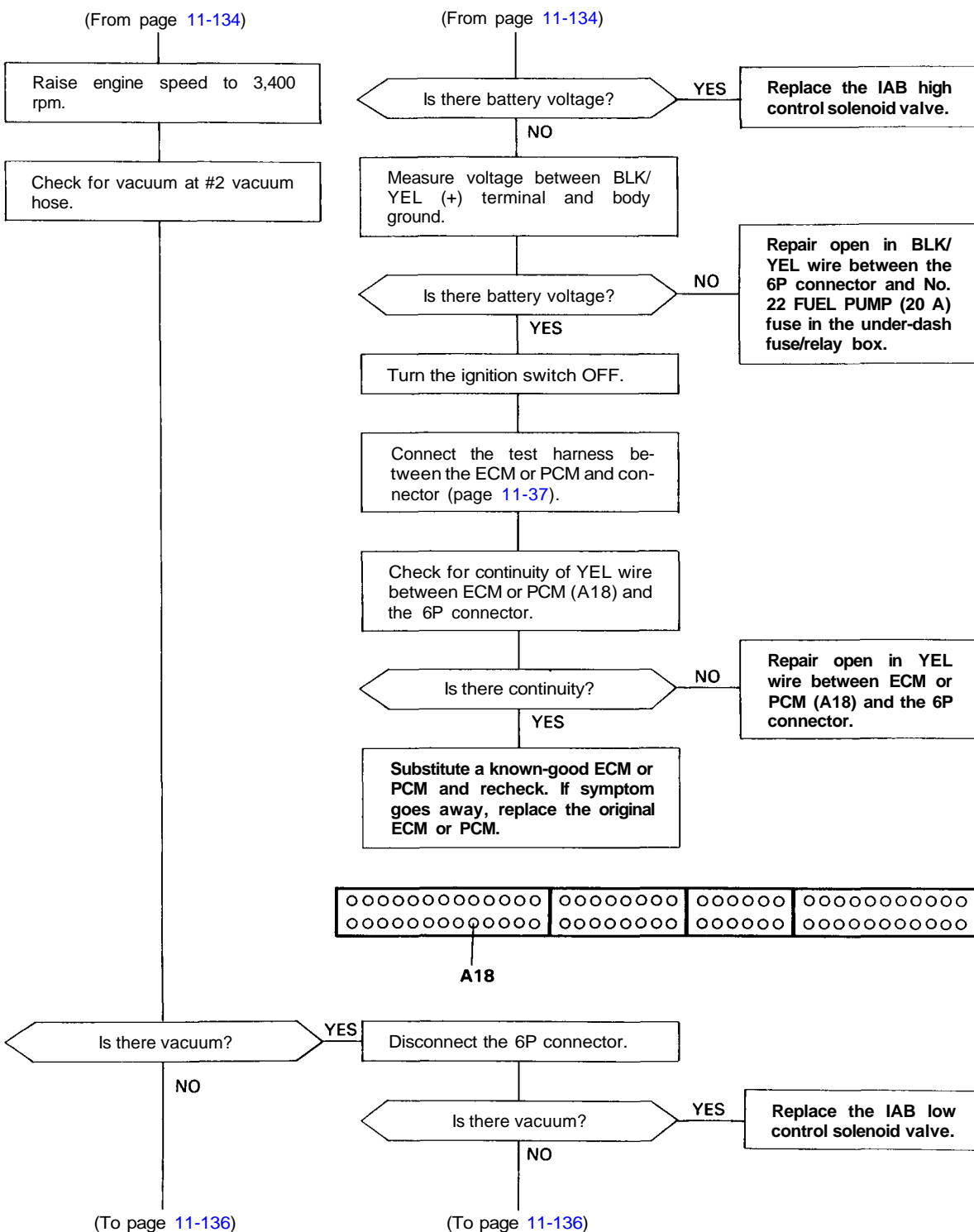
Intake Air System

Intake Air Bypass (IAB) Control System (cont'd)

(From page 11-133)

(From page 11-133)





Intake Air System

Intake Air Bypass (IAB) Control System (cont'd)

